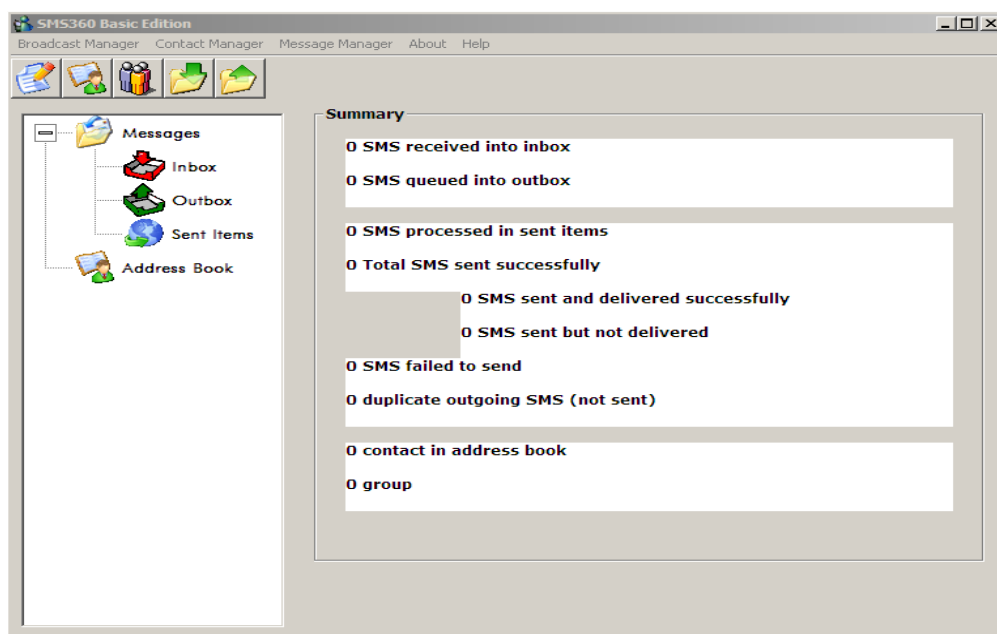


# MOBITEK® SMS360 Basic Edition



## INTRODUCTION

**MOBITEK® SMS360 Basic Edition** is a Short Messaging Service (SMS) broadcast system. With **MOBITEK® SMS360 Basic Edition**, company can:

- conduct direct marketing activities such as broadcasting news, information, promotion to customers via SMS
- manage customer base, by grouping, import customer list from Excel,
- provide alerts and updates to customers
- receive SMS from customers
- provide a new communication channel in addition to telephone, fax and e-mail

## FEATURES

1. Broadcast Manager- Compose an SMS (Chinese character is supported)
2. Contact Manager- Import/export contact from/to Excel file
3. Message Manager- Export incoming, and outgoing messages to Excel
4. SMS Engine- Real time display of SMS activities

## HOW TO SEND SMS

1. To send out SMS, compose a new message with these details:-
  - a)To: Recipient Phone No(012-2323223)
  - b)Body: body of the message.(Hye! How are you?)
2. **MOBITEK® SMS360 Basic Edition** will send the message to the recipient Phone and will give the delivery status. (Failed or pending or Sent)

## HOW TO READ SMS

1. Any incoming SMS received send by **MOBITEK® SMS360 Basic Edition** will be stored in "Inbox".

## REQUIREMENTS

1. **MOBITEK®** S80 SMS Modem or **MOBITEK®** MobiGATE (Enterprise SMS Gateway)
2. PC running on Windows XP until Windows 8 (Windows Server not supported)
3. 128MB RAM
4. No internet connection is required

**MOBITEK** System Sdn .Bhd. (207015-D)

6th Floor, Suite 16, IOI Business Park, Persiaran Puchong Jaya Selatan, Bandar Puchong Jaya, Puchong 47170, Selangor, Malaysia.

Tel: +603-80644288 Fax: +603-80642109 Web: [www.mobitek.my](http://www.mobitek.my)

# MOBITEK® SMS360 Basic Edition

## FULL FEATURES

### Broadcast Manager

Figure.1

SMS Broadcast Manager

Broadcast To :  Address Book

Broadcast Time :  Scheduler

Broadcast Subject :

Language: ☐ Chinese

Hello !

Template Message

Save as Template

Chars. Typed

Chars. Remaining

☐ Do not broadcast to recipient's number that cannot be delivered

Send Clear All Cancel

- Compose a SMS (Chinese character is supported) (figure.1)

Figure.2

SMS Broadcast Manager

Broadcast To :  Address Book

Broadcast Time :  Scheduler

Broadcast Subject :

Language: ☐ Chinese

Calendar

June 2013

Sun	Mon	Tue	Wed	Thu	Fri	Sat
26	27	28	29	30	31	1
2	3	4	5	6	7	8
9	10	11	12	13	14	15
16	17	18	19	20	21	22
23	24	25	26	27	28	29
30	1	2	3	4	5	6

Time

OK Cancel

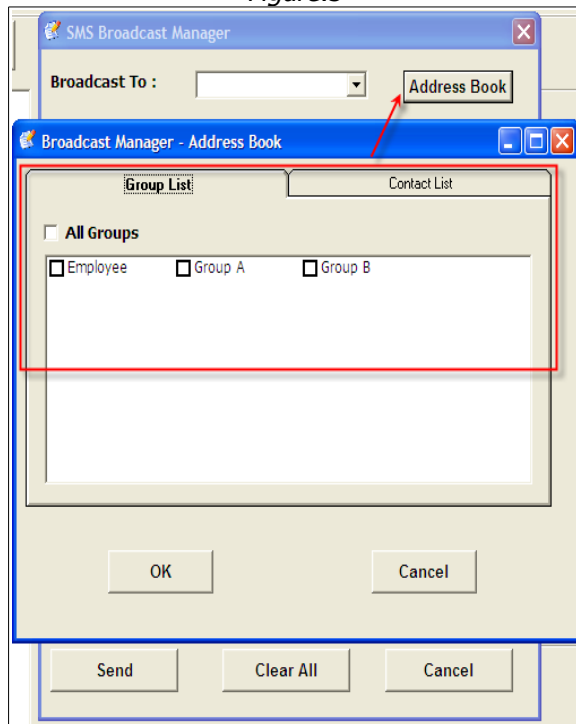
☐ Do not broadcast to recipient's number that cannot be delivered

Send Clear All Cancel

- Schedule broadcast time (figure.2)

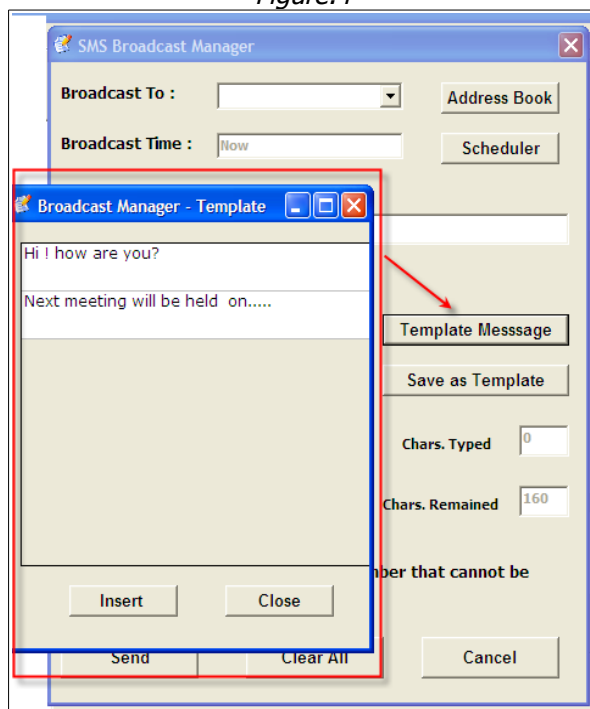
# MOBITEK® SMS360 Basic Edition

Figure.3



- Send SMS to 1 contact or multiple contacts
- Send SMS to 1 group or multiple groups (figure.3)

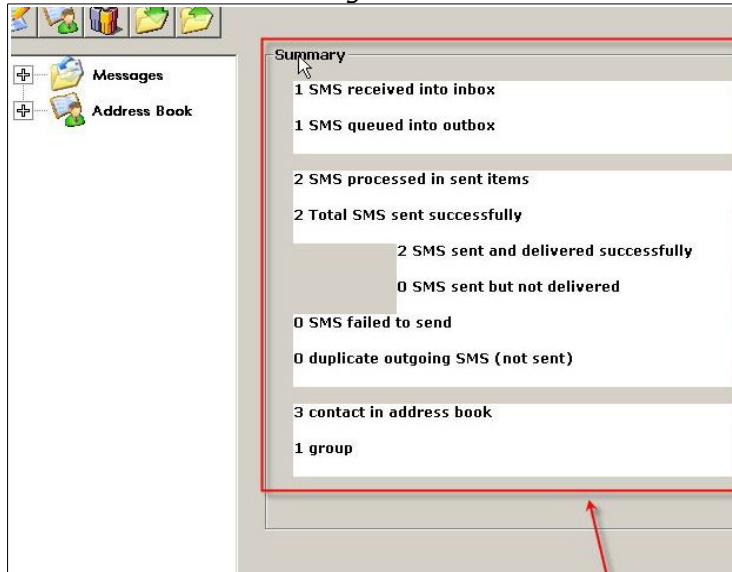
Figure.4



- Template – use message from template so as to save typing. (figure.4)

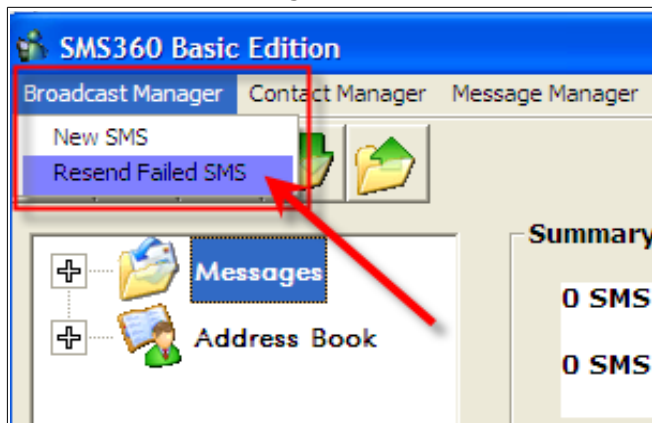
# MOBITEK® SMS360 Basic Edition

Figure.5



- SMS usage report. (figure.5)

Figure.6



- Resend all failed SMS. (figure.6)

Figure.7



- Resend failed SMS in Sent Item box. (figure.7)

# MOBITEK® SMS360 Basic Edition

## Contact Manager

Figure.8

**Contact Manager**

**New Contact**

**Name** Mr. John

**Mobile** 01239928882

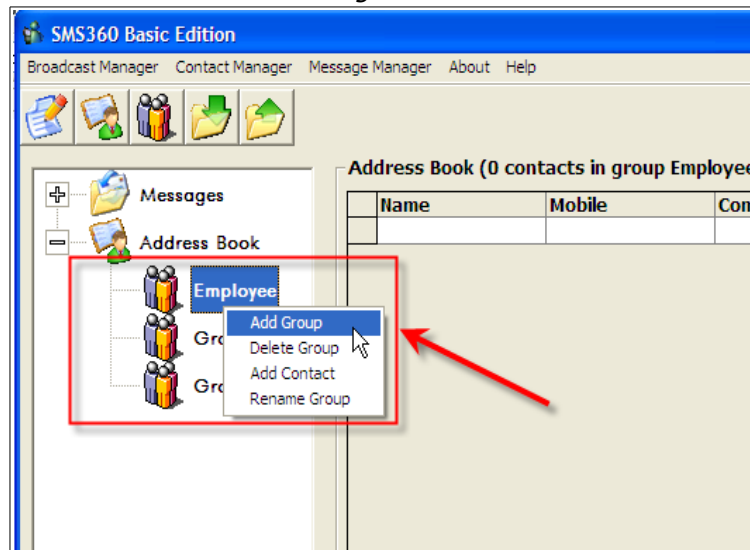
**Company Name** Mobitek System Sdn Bhd

**Group** ☐ Employee ☐ Group A ☐ Group B

OK Cancel

- Create contact. (figure.8)

Figure.9



- Create / Delete / Rename group. (figure.9)

# MOBITEK® SMS360 Basic Edition

Figure.10

mr. John

Name: mr. John

Mobile: 01234556787

Company Name:

Group: ☒ Employee ☐ Group A ☐ Group B

OK Cancel

- Assign contact to a group or groups. (figure.10)

Figure.11

SMS360 Basic Edition

Broadcast Manager Contact Manager Message Manager About Help

Messages Address Book

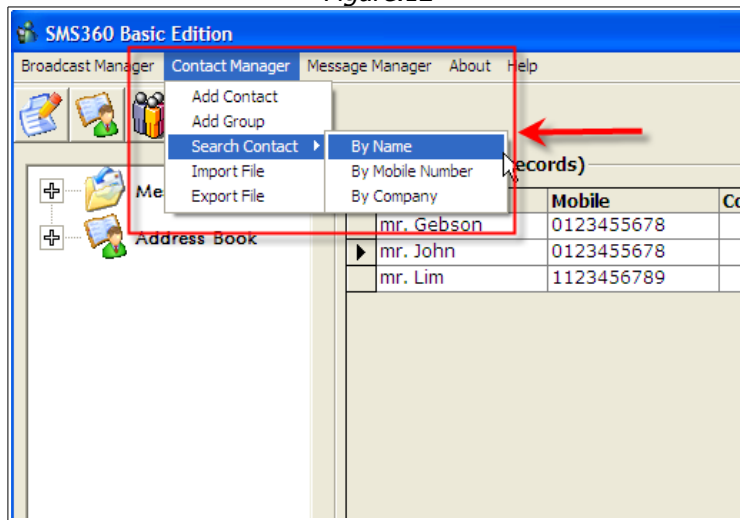
Address Book (3 records)

Name	Mobile	Company Name
mr. Gebson	0123455678	
mr. John	0123455678	
mr. Lim	1123456789	

- Accepts different contact with same mobile number. (Figure.11)

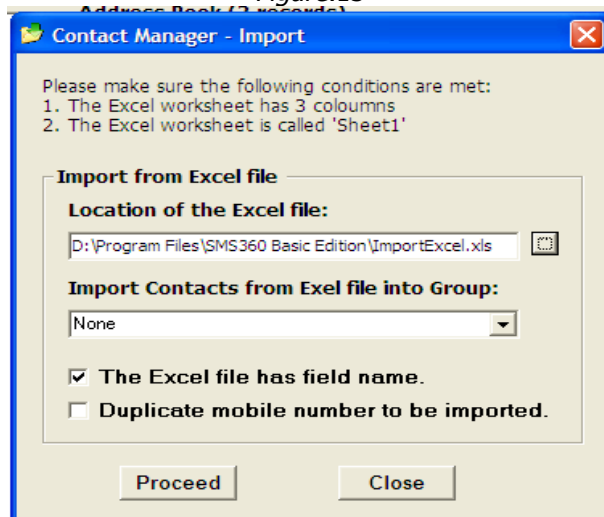
# MOBITEK® SMS360 Basic Edition

Figure.12

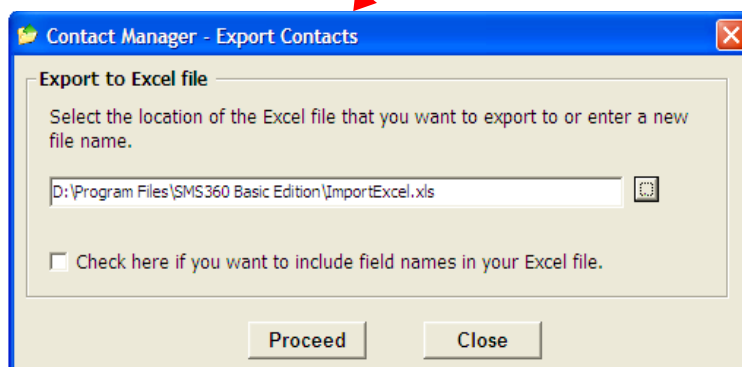


- Search contact by name and mobile number. (figure.12)

Figure.13



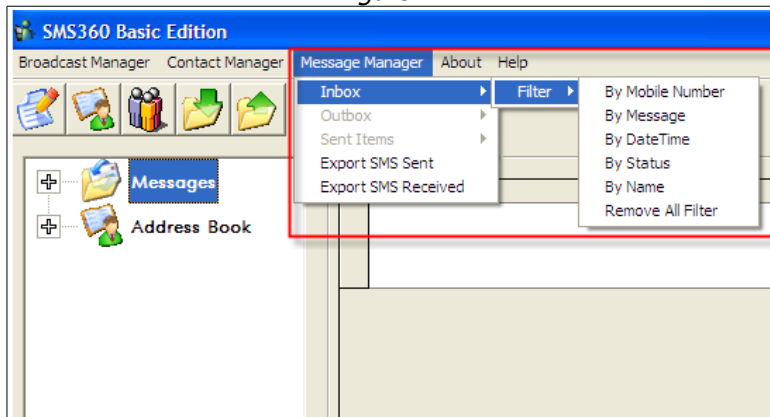
- Import/export contact from/to Excel file. (figure.13)



# MOBITEK® SMS360 Basic Edition

## Message Manager

Figure.14



- Filter SMS by name, message, subject, date and mobile number. (figure.14)

## SMS Engine

Figure.15



- Detect duplicate message to a single mobile number
- Does not send duplicate message to the same mobile number
- Able to set engine direction to 2 way, 1 way send or 1 way read
- Report delivery status of each SMS
- Real time display of SMS activities. (figure.15)